

# Communities Grow with **McDonald's**





# Table of Contents

---

Growth & Development .....	3
Real Estate Map & Contacts .....	5
Asset Management Territories .....	6
Portfolio Management.....	7
U.S. Construction and Design Contacts .....	8
McDonald's Global Development Contacts .....	8
Additional Resources .....	9



# Growth & Development

McDonald's currently has more than 38,000 restaurants in 120 countries, with approximately 14,000 in the United States. McDonald's goal is to be a modern, progressive burger and breakfast restaurant. McDonald's will achieve this by delivering quality food, outstanding service, and a contemporary customer experience through modern designs and the implementation of Mobile Order and Pay and self-ordering kiosks. We continue to grow our brand by building new restaurants.

Whether you visit a McDonald's in your local neighborhood, an airport, mall, or tollway location, we strive for every customer in every restaurant to have an exceptional experience every time.

## McDonald's USA Development Overview:

<p><b>100</b> new restaurants to open</p>	<p><b>Over 12,983</b> already modernized restaurants installed Experience of the Future</p>	<p><b>≈ 11,620</b> restaurants have been remodeled since 2010 program inception</p>
<p><b>268</b> new restaurants were opened or relocated in the past 5 years</p>	<p><b>408</b> restaurants were rebuilt in the last 5 years</p>	<p><b>≈ 13,118</b> restaurants are currently modernized - 13,350 by the end of 2023</p>

**McDonald's Unveils Plan to Accelerate New Store Openings in 2023 - Connect CRE**

**McDonald's Doubles Down On Restaurant Development - Food Business News**

**McDonald's is Cool Again - WSJ**

**McDonald's Announces New Growth Strategy (mcdonalds.com)**





# Ideal Site Plan Specs

## U.S. Site Criteria

*(Traditional Freestanding\*)*

**Land area:** 44,000 +/- square feet

**Building area:** 4,500 square feet

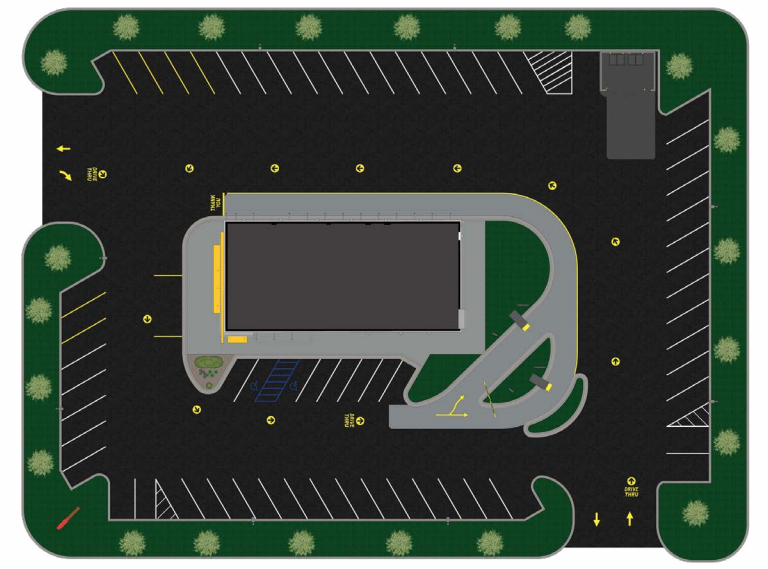
**Building height:** minimum 21'7"

Corner or corner wrap with signage on two major streets

Signalized intersection

On-site parking

At McDonald's, we strive to be more than just a restaurant – we're a first job for many, a community partner, a model for other restaurants around the world, and a company seeking new ways to fulfill our mission to be our customers' favorite place and way to eat and drink.



Find out more about McDonald's by visiting [www.mcdonalds.com](http://www.mcdonalds.com)

Follow us!  **Twitter** and  **Facebook**



TOC

**Growth & Development**

Real Estate Contacts

Asset Managers

Portfolio Management Contacts

U.S. Design & Construction Contacts

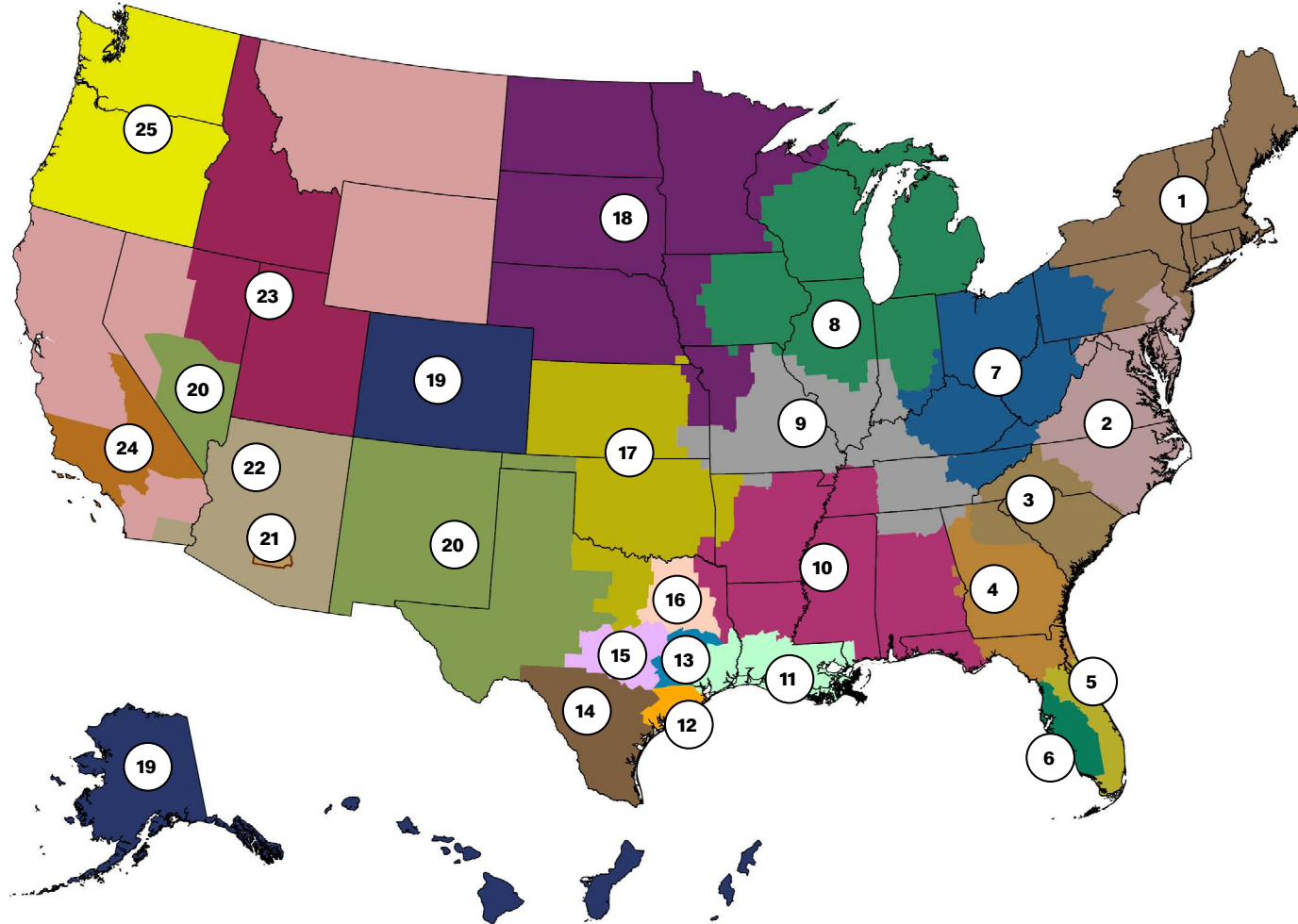
Additional Resources

# Real Estate Map & Contacts

The Real Estate Community of Expertise is responsible for executing the U.S. new store strategy and continuing to build on our portfolio of 14,000 of conveniently located restaurants.

**Vikki Seward**  
Director of Real Estate - West

**Meredith Lenoir**  
Director of Real Estate - East



## Real Estate Manager Contacts

### Lisa Walker

National RE Lead  
lisa.walker@us.mcd.com

**11 Reed Casper**  
reed.casper@us.mcd.com

**13 Ray Clopton**  
ray.clopton@us.mcd.com

**17 Kaley DeVries**  
kaley.devries@us.mcd.com

**16 Craig Givens**  
craig.givens@us.mcd.com

**14 Carl Kocurek**  
carl.kocurek@us.mcd.com

**12 Laura Lund**  
laura.lund@us.mcd.com

**15 Andrew Richards**  
andrew.richards@us.mcd.com

**TBD**  
National RE Lead  
TBD

**21 Gary Blau**  
gary.blau@us.mcd.com

**20 Marineh Dermovsesian**  
marineh.dermovsesian@us.mcd.com

**24 Schuyler Jackson**  
schuyler.jackson@us.mcd.com

**22 Chris Ryan**  
christopher.ryan@us.mcd.com

**Troy Faulkner**  
National RE Lead  
troy.faulkner@us.mcd.com

**1 Jim Doherty**  
james.doherty@mcd.com

**2 Ashleigh Schneider**  
ashleigh.schneider@us.mcd.com

**Amanda Madeira** (Special Venues-U.S. Market)  
amanda.madeira@us.mcd.com

### Amy Bayles

National RE Lead  
amy.bayles@us.mcd.com

**7 Rudy McCarthy**  
rudy.mccarthy@us.mcd.com

**8 Chris Smitherman**  
christopher.smithermanii@us.mcd.com

**9 Uri Starr**  
uri.starr@us.mcd.com

**10 TJ Tranel**  
thomas.tranel@us.mcd.com

### Rich Davis

National RE Lead  
rich.davis@us.mcd.com

**3 Mathis Nedell**  
mathis.nedell@us.mcd.com

**5 Rey Hernandez**  
rey.hernandez@us.mcd.com

**6 Dan Toth**  
daniel.toth@us.mcd.com

**4 Timothy "Aaron" Smith**  
timothy.smith@us.mcd.com

### Bob O'Connell

National RE Lead  
bob.oconnell@us.mcd.com

**23 Mike Mateen**  
michael.mateen@us.mcd.com

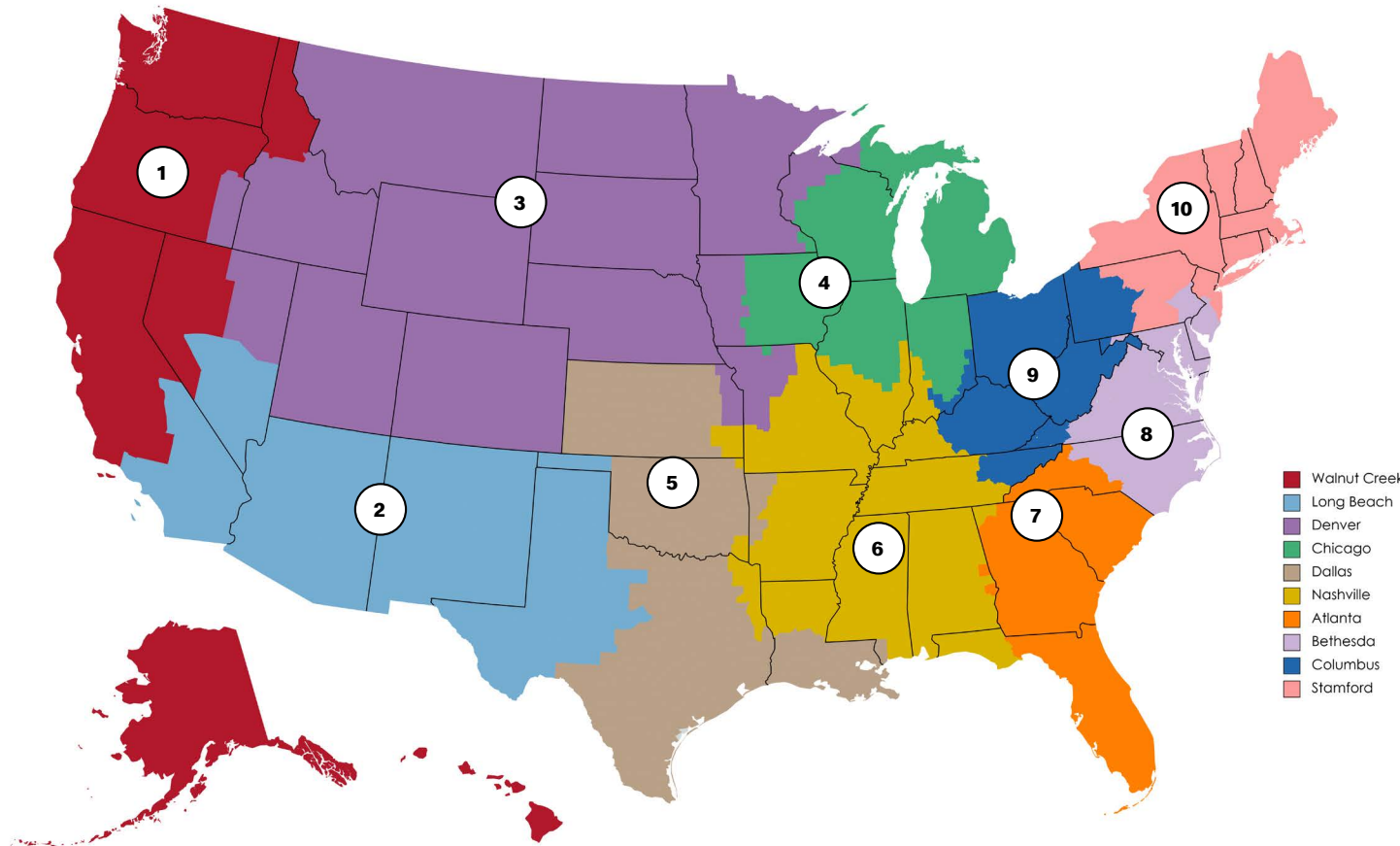
**25 Taylor Miller**  
taylor.miller@us.mcd.com

**19 Kellie Wisbrock**  
kellie.wisbrock@us.mcd.com

**18 Jeff Walenta**  
jeff.walenta@us.mcd.com

# Asset Management Territories

The Asset Management Team is responsible for managing the Leased portfolio of McDonald's locations throughout the U.S. The team works diligently with landlords to maintain high standards for our contract terms and manage lease tenure and purchase options to ensure operating longevity.



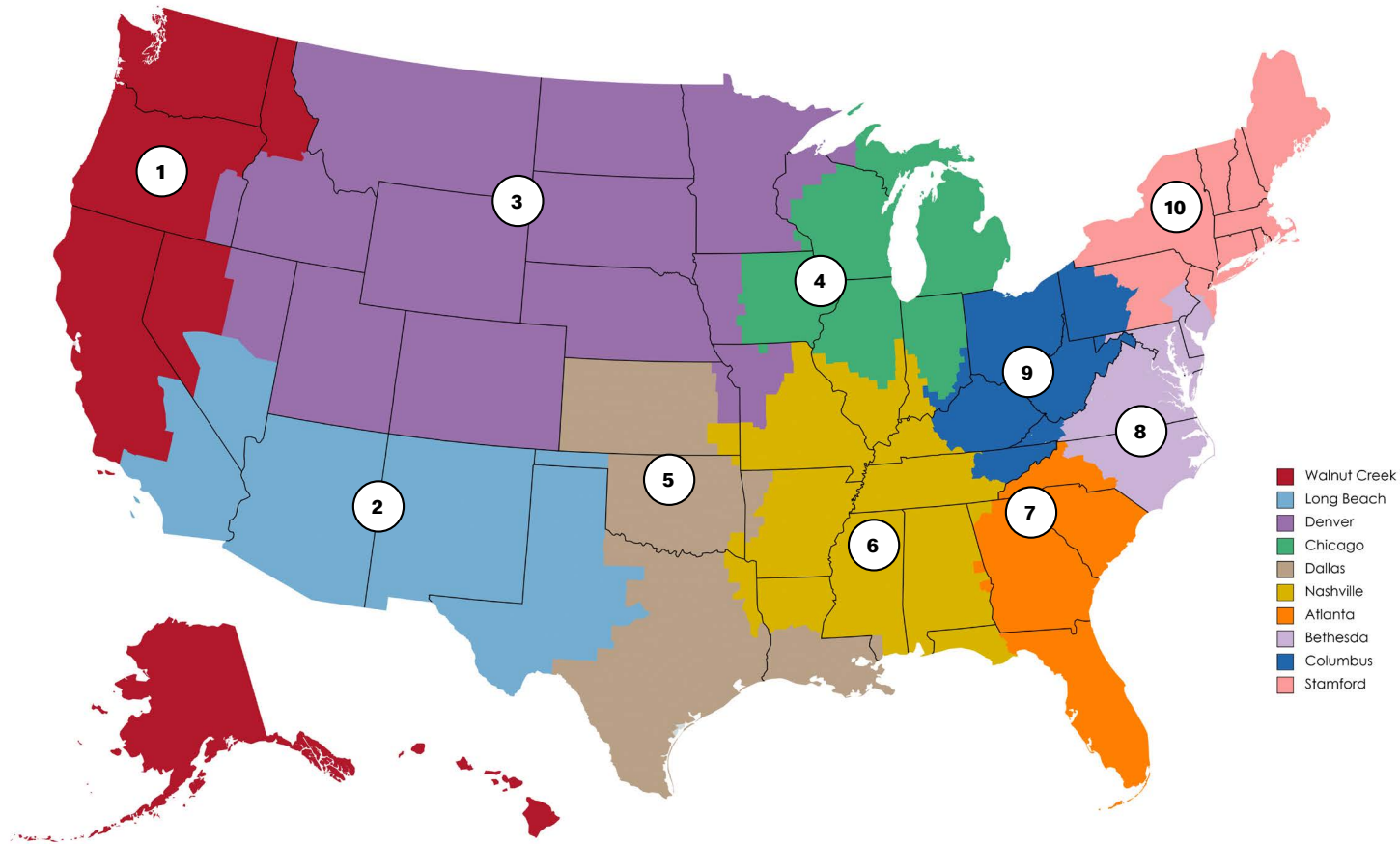
**Joe Diozzi**  
Director of Asset Management

## Asset Manager Contacts

- |   |   |
|---|---|
| <p><b>1 Walnut Creek</b><br/><b>Mark Stephenson</b><br/>mark.stephenson@us.mcd.com</p> <p><b>2 Long Beach</b><br/><b>Gilda Amini</b><br/>gilda.amini@us.mcd.com</p> <p><b>3 Denver</b><br/><b>Virginia Coggins</b><br/>virginia.coggins@us.mcd.com</p> <p><b>4 Chicago</b><br/><b>Elena Vasquez-Love</b><br/>elena.vasquez_love@us.mcd.com</p> <p><b>5 Dallas</b><br/><b>David Shammass</b><br/>david.shammass@us.mcd.com</p> <p><b>6 Nashville</b><br/><b>Virginia Coggins</b><br/>virginia.coggins@us.mcd.com</p> | <p><b>7 Atlanta</b><br/><b>Jami Hays</b><br/>jami.hays@us.mcd.com</p> <p><b>8 Bethesda</b><br/><b>Mary Cleveland</b><br/>mary.cleveland@us.mcd.com<br/>Philly Metro<br/><b>Linda Bartlett</b><br/>linda.bartlett@us.mcd.com</p> <p><b>9 Columbus</b><br/><b>Melissa Way</b><br/>melissa.way@us.mcd.com</p> <p><b>10 Stamford</b><br/>NY Metro<br/><b>Carol DeMarco</b><br/>carol.demarco@us.mcd.com<br/>Boston/Upstate NY/NE PA<br/><b>Linda Bartlett</b><br/>linda.bartlett@us.mcd.com</p> |
|---|---|

# Portfolio Management

The Portfolio Management Team is responsible for overseeing McDonald's 14,000 existing locations in the US. This includes owned and leased assets within the portfolio and any real estate matters that could impact the operations of an existing restaurant.



## Portfolio Management Contacts

### 1 Walnut Creek

**Eileen Baker**  
Eileen.baker@us.mcd.com

### 2 Long Beach

**Eileen Baker**  
Eileen.baker@us.mcd.com

### 3 Denver

**Kim Pavlin**  
kimberly.pavlin@us.mcd.com

### 4 Chicago

**Mary Dolby**  
mary.dolby@us.mcd.com

### 5 Dallas

**Kim Pavlin**  
kimberly.pavlin@us.mcd.com

### 6 Nashville

**Chris Domengeaux**  
chris.domengeaux@us.mcd.com

### 7 Atlanta

**Jackie Weber**  
jacquelyn.weber@us.mcd.com

### 8 Bethesda

**Jackie Weber**  
jacquelyn.weber@us.mcd.com

### 9 Columbus

**Chris Domengeaux**  
chris.domengeaux@us.mcd.com

### 10 Stamford

**Matt Cullen**  
matt.cullen@us.mcd.com

# U.S. Construction and Design Contacts

## U.S. Corporate Construction Contacts

**Joe Collins**  
Sr. Director, Arch/Const  
joe.collins@us.mcd.com

**Vivian Valdivia**  
Director, Construction - East  
vivian.valdivia@us.mcd.com

**Jimmy Lopez**  
Director, Construction - West  
jimmy.lopez@us.mcd.com

**Mike Motta**  
Supply Chain Director, Construction  
michael.motta@us.mcd.com

## McDonald's Restaurant Design Group Contacts

**Design Executive Director**  
**Doug Kimball**  
douglas.kimball@us.mcd.com

**Sustainability Manager**  
**John Rockwell**  
john.rockwell@us.mcd.com

# McDonald's Global Development Contacts

### United States

McDonald's USA  
Chicago, IL  
**Tabassum Zalotrawala**  
Sr Vice President, Chief  
Development Officer,  
U.S. Restaurant Development  
tabassum.zalotrawala@us.mcd.com

### United States

McDonald's USA  
Chicago, IL  
**John Wendel**  
Sr Director, U.S. Restaurant  
Development  
john.wendel@us.mcd.com

### Corporate

McDonald's Corporation  
Chicago, IL  
**Stephen Douglas**  
Vice President,  
Global Development  
stephen.douglas@us.mcd.com

### Corporate

McDonald's Australia  
Thornleigh, Australia  
**Michael Dimech**  
Sr Director - Global Development  
Strategy & Tools  
michael.dimech@au.mcd.com

### Canada

McDonald's of Canada  
Toronto, ON  
**Alex Jones**  
Head of RE & Development  
alex.jones@ca.mcd.com

### Europe

McDonald's Corporation  
**Stephen Douglas**  
Vice President,  
Global Development  
stephen.douglas@us.mcd.com

### Latin America/Caribbean Dev

McDonald's Corporation  
Chicago, IL  
**Adel Almohtadi**  
Sr. Director, Development  
Latin America  
adel.almohtadi@us.mcd.com

### Middle East

McDonald's™ Middle East  
Development Company  
Dubai, UAE  
**Hisham Sidky**  
Sr. Development Director  
hisham.sidky@apmea.mcd.com

### Asia/Pacific/Middle East/Africa

McDonald's Corporation  
Hong Kong  
**Jackey Sze**  
Development Lead Asia  
Business Unit  
jackey.sze@apmea.mcd.com







## Additional Resources

### [Excess Property Team Email](#)

Interested in a closed location? Choose the previous link or email: [us-excess.website.inquiries@us.mcd.com](mailto:us-excess.website.inquiries@us.mcd.com)

### [Becoming a Franchisee](#)

Want to learn more on how to become a franchisee? Choose the previous link or go to URL: <https://www.mcdonalds.com/us/en-us/us-franchising/acquiring.html>

## We Are Hiring

### [Open Jobs/Corporate Careers](#)

Interested in working with us in the corporate office or providing support in the field? Choose the previous link or go to the URL: <https://careers.mcdonalds.com/main/us/corporate>